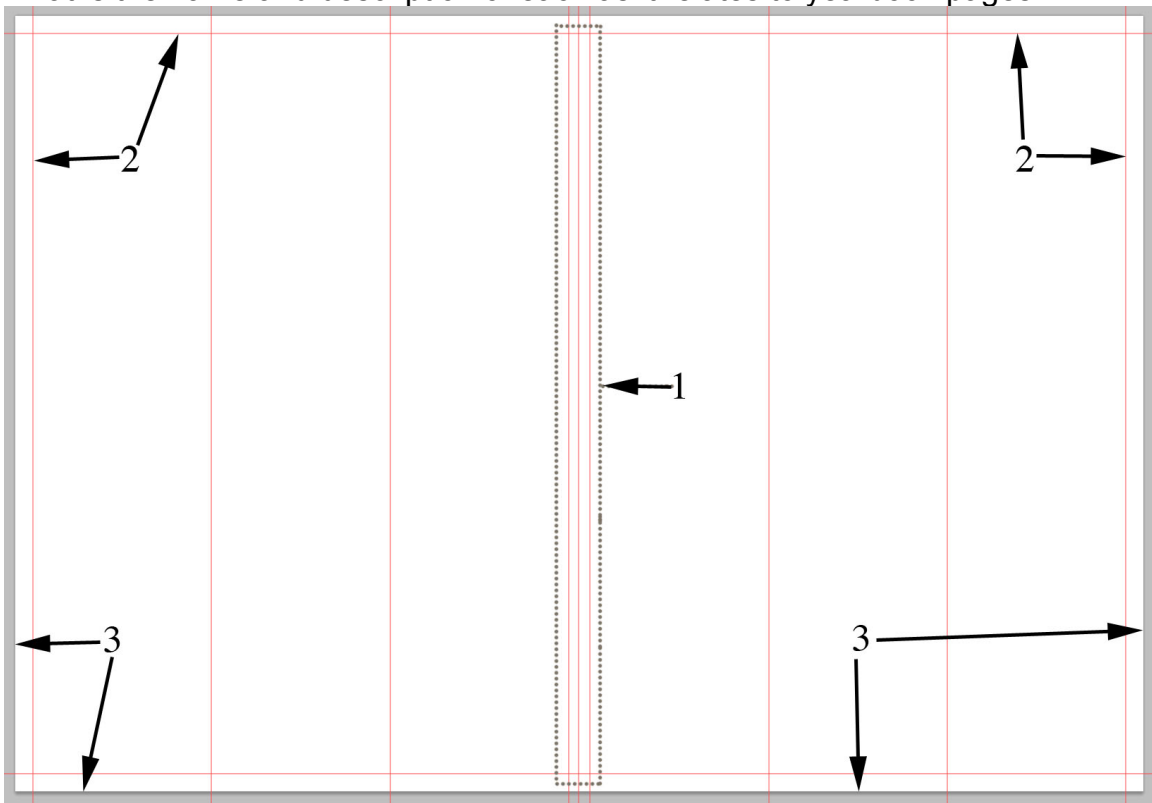


Name: **KEY** _____

What is the name and description of each as it relates to yearbook pages?



- 1. Gutter
- 2. Bleed Line
- 3. Page Edge

Define "gutter" as it relates to yearbook pages

The space between a two page spread that may be cut off in the page fold

Define "bleed line" as it relates to yearbook pages

The line where images or text shouldn't go past or they may be cut off when the pages are cut

Define "page edge" as it relates to yearbook pages

The very edge of the page, it's usually cut off when the pages are cut at the printing plant

What should not go in (or overlap) the gutter and why?

A person's face, because it may be cut off in the page fold

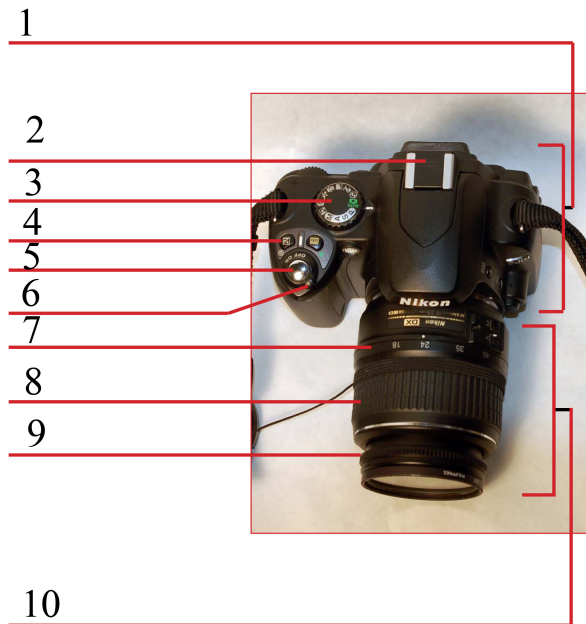
What should not go past the bleed line and why?

images or text shouldn't go past or they may be cut off when the pages are cut

What should go past the bleed line and all the way to the page edge and why?

Any background because if it doesn't go all the way to the page edge you may get a small area of white when the pages are cut at the printing plant

Anatomy of a Camera



Match The Camera Parts

- | | |
|-----------------|--|
| <u> i </u> 1 | A. Focus Ring (for manual focus only) |
| <u> b </u> 2 | B. External Flash Connector |
| <u> d </u> 3 | C. Zoom Number (in millimeters) |
| <u> e </u> 4 | D. Command Wheel |
| <u> h </u> 5 | E. Exposure Control (for shutter & aperture) |
| <u> g </u> 6 | F. Camera Lens |
| <u> c </u> 7 | G. On/Off Switch |
| <u> j </u> 8 | H. Shutter Release Button |
| <u> a </u> 9 | I. Camera Body |
| <u> f </u> 10 | J. Zoom Ring |

What key must you hold down in Photoshop when you are resizing an image so that it is not distorted?

SHIFT

What is a Pixel?

The small squares that make up digital images

Define Image resolution as it pertains to digital images?

The quality (clearness) of the image measured in pixels per inch

What is Image Resolution measured in?

Pixels per inch

What has more pixels, a low resolution image or a high resolution image?

High

Why should you only use high resolution images for yearbook images?

They are higher quality (clearer) and can be resized more before they become fuzzy

What is the pixel resolution of a high resolution image?

300 ppi (pixels per inch)

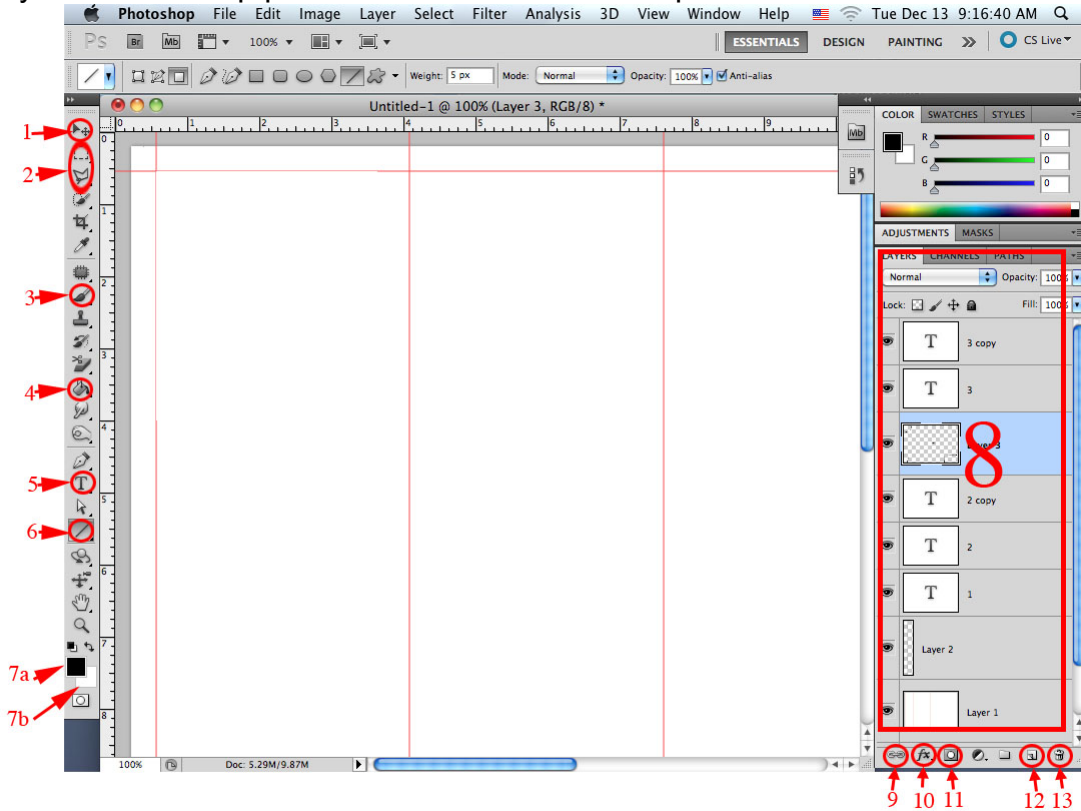
What is the pixel resolution of a low resolution image?

72 ppi

How many pixels in a megapixel?

1 million

Identify the PhotoShop parts with the name or description.



| | |
|-------------------------|----------------------------|
| 1. Move Tool | 2. Select Tools |
| 3. Paint Brush | 4 Paint Bucket (fill tool) |
| 5 Type Tool | 6 Shape Tools |
| 7a Foreground Color | 7b Background Color |
| 8 Layers Panel | 9 Link Layers |
| 10 Layer Style (effect) | 11 Mask |
| 12 New Layer | 13 Delete Layer |

What should a good photographer know about the camera?

How to change it's setting so that you can take good pictures in different conditions

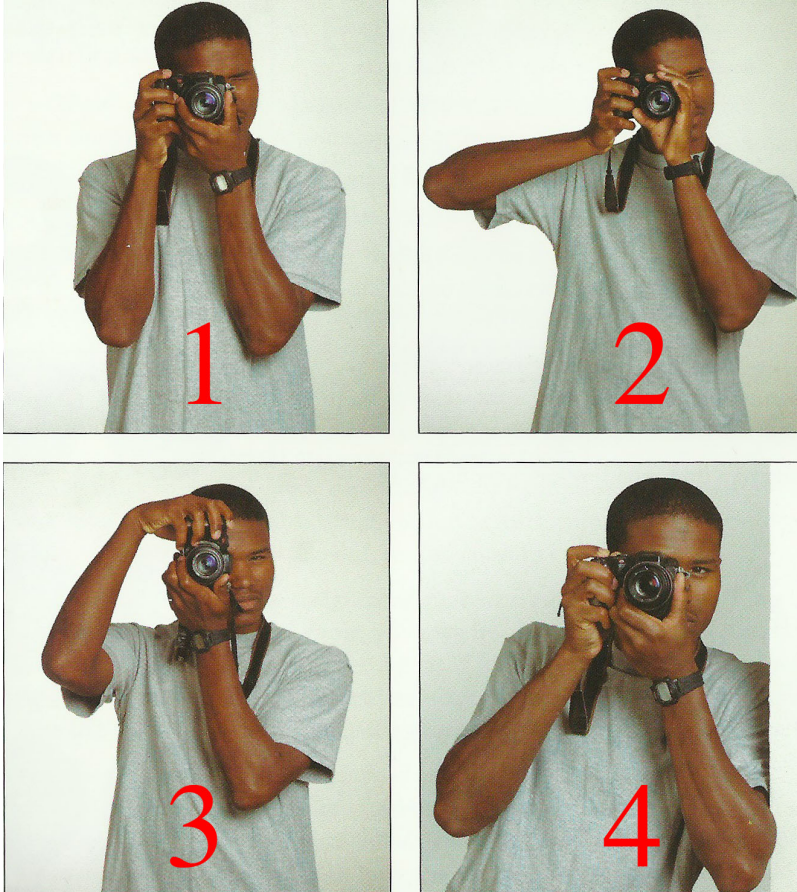
Good photographers should carry a camera as much as possible, especially during photo assignments. Why?

So that they do not miss any awesome photo opportunities

What's the proper way to hold a camera?

With both hands and elbows in. Keep it as steady as possible. Use the neck strap.

In which of these 4 pictures is the photographer holding the camera incorrectly and why?



Picture 2; his elbows are out

When arriving at your photo assignment, what should you do to get the best pictures?

Move around as much as possible to get the best angles

When on a photo assignment, what does "be inconspicuous but inquisitive" mean?

Don't bother the subjects but try to be always getting the best photos

How many pictures should you take at a photo assignment?

LOTS, there are never too few pictures.